

To Rent

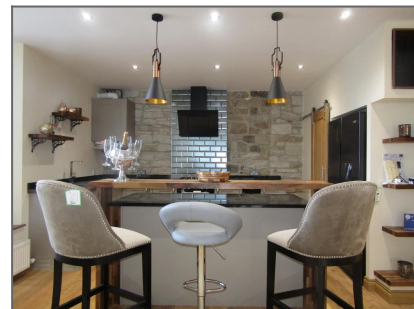
Anderson Court, Burnopfield, Burnopfield, NE16



**£1,250 per month**

**4 bedroom Apartment**

- ✓ Centrally Located in Burnopfield
- ✓ Spacious Open Plan Lounge & Dining Area
- ✓ Modern Fitted kitchen
- ✓ Master Bedroom with En Suite Facilities
- ✓ Three further Bedrooms
- ✓ Family Bath / Shower Room / W.C
- ✓ Cloaks / W.C
- ✓ Private Parking Space



## Description

PETER ROSS are delighted to offer this unique opportunity to rent this stunning four Bedroom Luxury Apartment set over two floors and situated in the old Co-operative building in the tranquil picturesque village of Burnopfield. Developed and renovated to a very high standard this building dates back to the late 1800's. With far reaching views over the Derwent Valley to the rear and offering wonderfully spacious living accommodation throughout, this superb four bedroom luxury family home is situated locally for easy access to the local shops and amenities that Burnopfield has to offer and within commuting distance of Gateshead's Metrocentre and Gateshead town centre, Newcastle and Durham City Centres.

Briefly comprising Intercom system access to building entrance, stairs up to the first floor landing, entrance door, hallway, cloaks/w.c, open plan lounge, dining area and kitchen, bedroom four/cinema room/study, stairs up to the first floor landing, three further bedrooms one having en suite facilities, family bath/shower room /W.C. Externally there is a private parking space. Overall a luxury apartment offered for Rent. Please call 0191 488 6080 for further information or to arrange your appointment to view.



Additional Kitchen



Hallway

## Ground Floor

Entrance door to stairs -

Stairs up to the first floor hallway -

## First Floor

Hallway -

Entrance door -

Hallway -

Open plan lounge, Kitchen& Dining Area -

Bedroom Four/Cinema/Study Room -

Cloaks /W.C -

## Second Floor

Stairs up to the landing -

Bedroom Three -

Master Bedroom -



Master Bedroom



Additional Master Bedroom



**En Suite -**

**Bedroom Two -**

**Family Bathroom/ W.C -**



En Suite



Bedroom Two



Bedroom Three



Bedroom Four/cinema/study Room





Family Bathroom / W.C



**Disclaimer:** These particulars are thought to be materially correct though their accuracy is not guaranteed and they do not form part of any contract. All measurements are approximate and we have not tested any fitted appliances, electrical or plumbing installation or central heating systems.